



## **GYMNASIUM PLANNING**

October 6, 2021

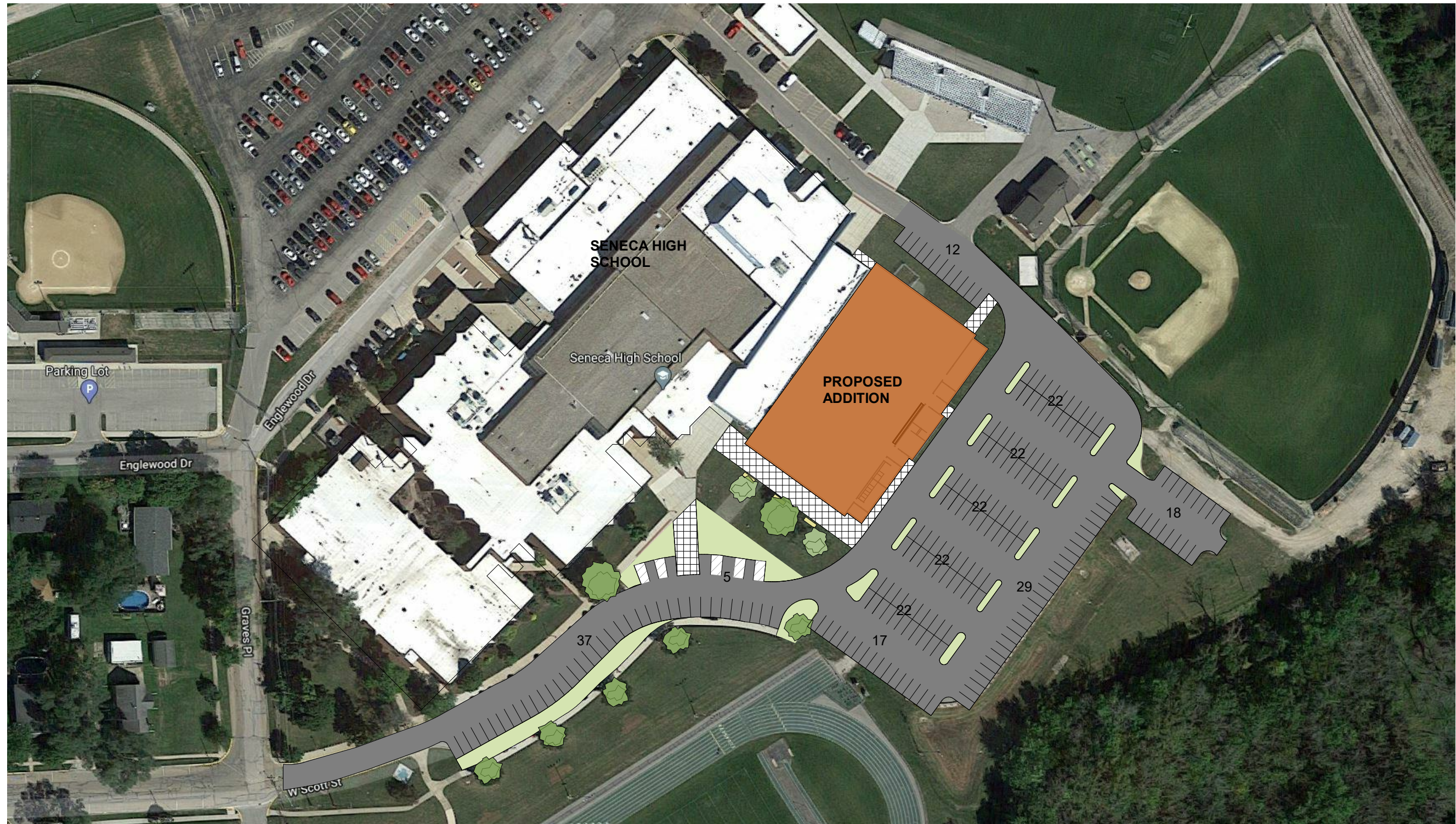


# MEETING

## AGENDA

### Topics:

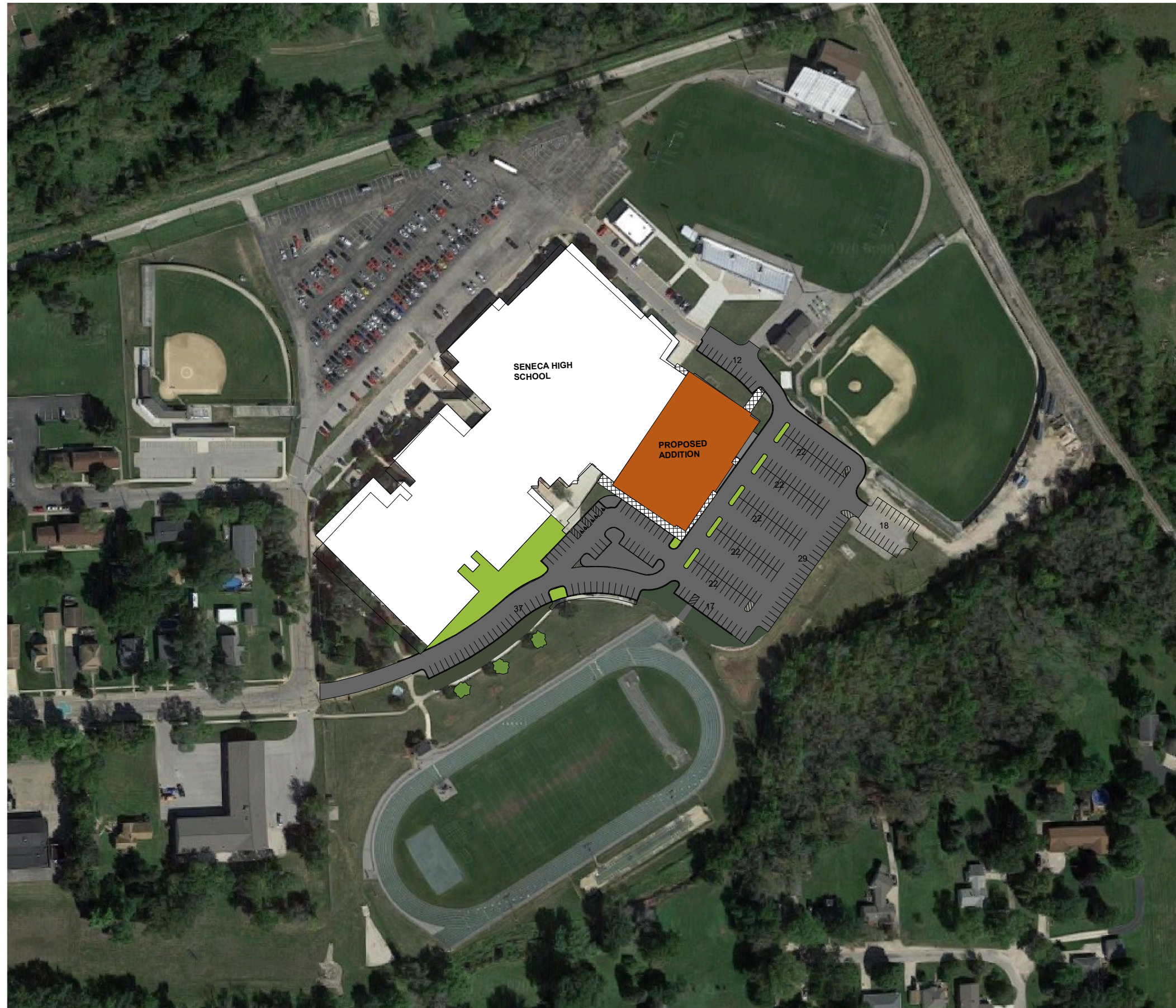
- SITE PLAN CONFIGURATIONS
- FLOORING AND BLEACHERS
- BUILDING FORM AND MASSING
- BUILDING DESIGN CONSIDERATIONS
  - NATURAL LIGHT
  - BUILDING MATERIALS



**1 SITE PLAN**  
1" = 100'-0"  
0 75' 150'



**1** SITE PLAN (ALTERNATE PARKING ARRANGEMENT)  
1" = 160'-0"  
0 120' 240'



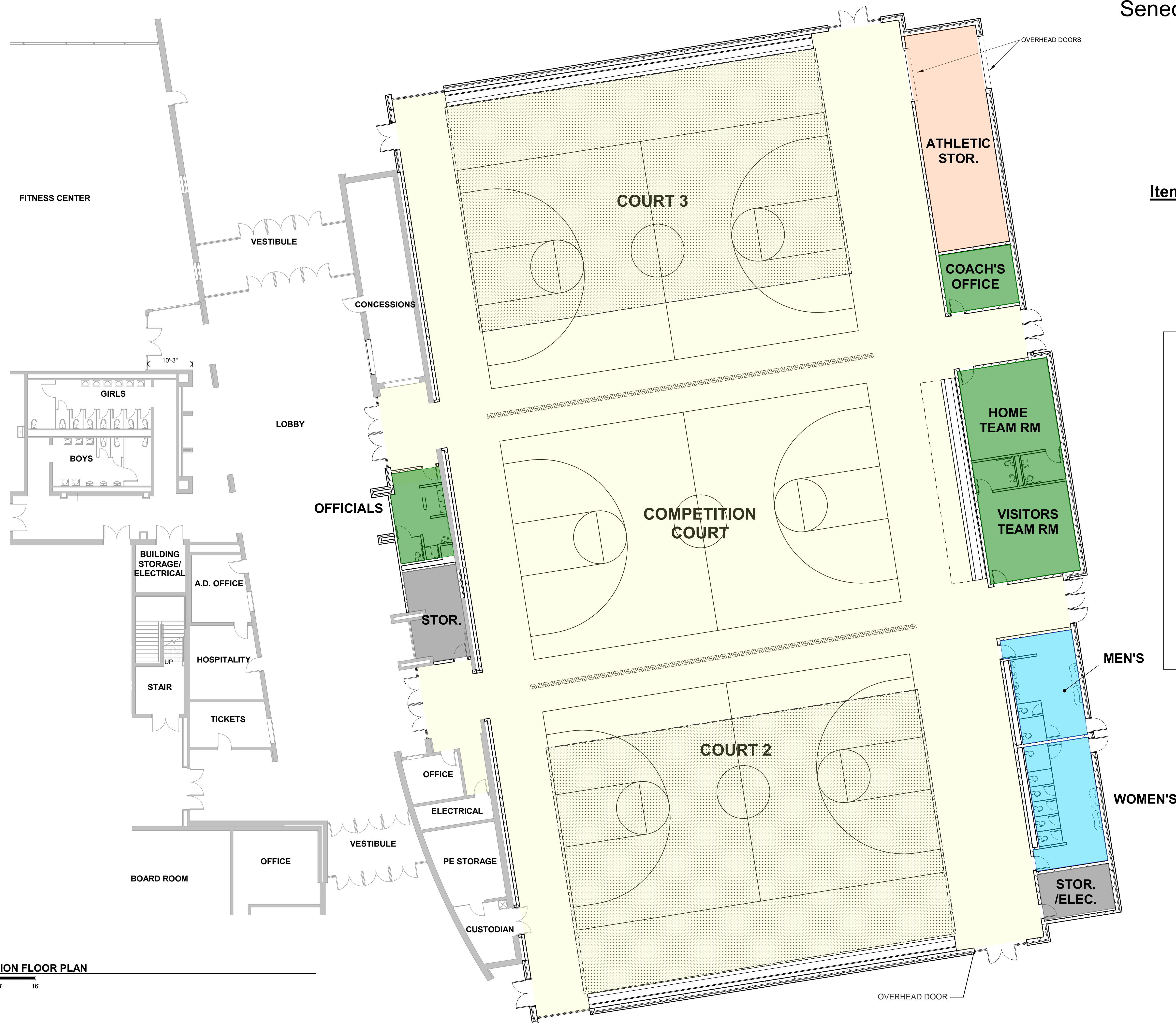
**1** SITE PLAN (ALTERNATE PARKING ARRANGEMENT 2)  
1" = 160'-0"  
0 120' 240'



# Seneca Township HS

Seneca Gymnasium Addition

October 06, 2021



### Items To Be Accomodated:

- Wrestling Mat Storage
- Dividing Curtains
- Batting Cages

### FUNCTION LEGEND

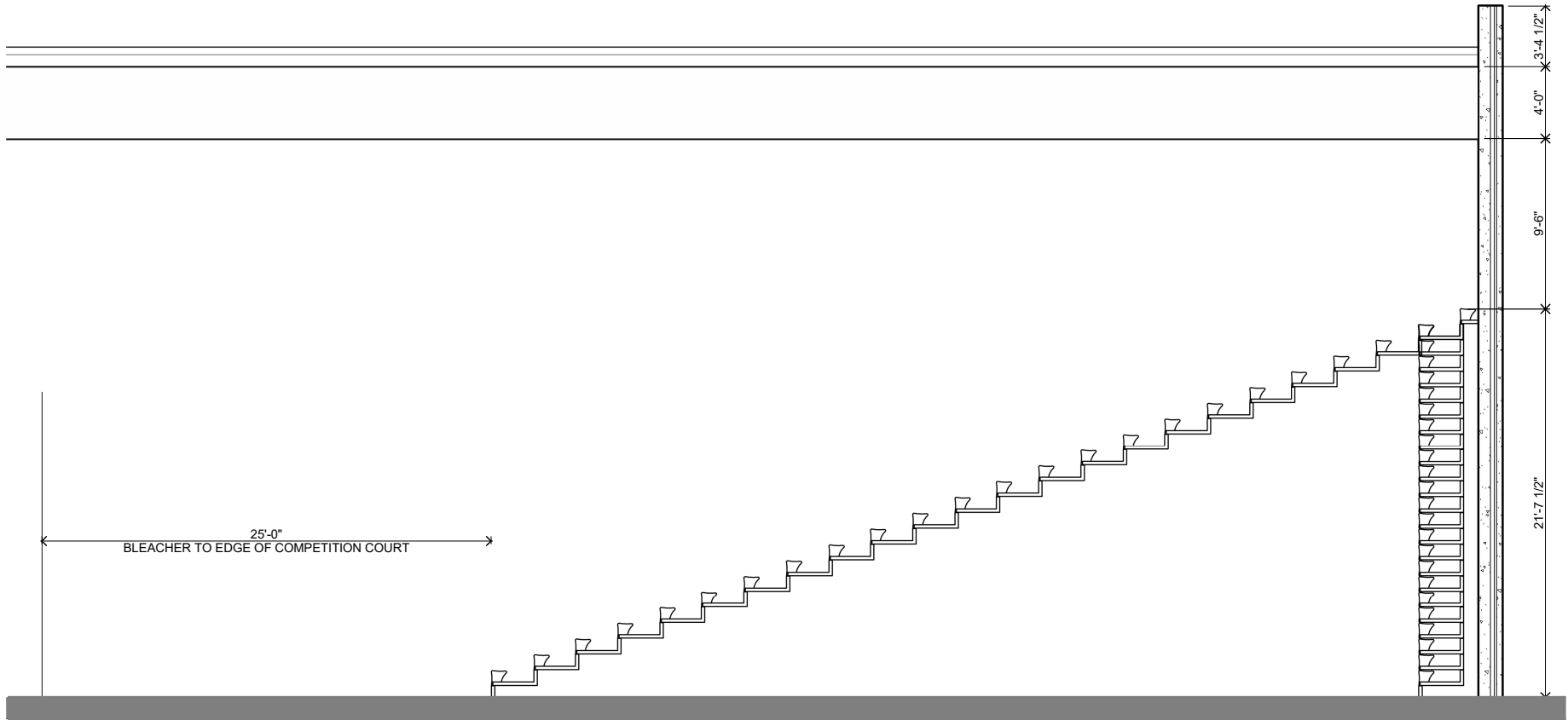
ACTIVITY & CIRCULATION	
SUPPORT SPACES	
TOILETS	
MECH/ELEC,	
STORAGE	

**1 GYMNASIUM ADDITION FLOOR PLAN**  
 3/32" = 1'-0"  
 0 8' 16'



# BLEACHERS

## DESIGN & PARAMETERS

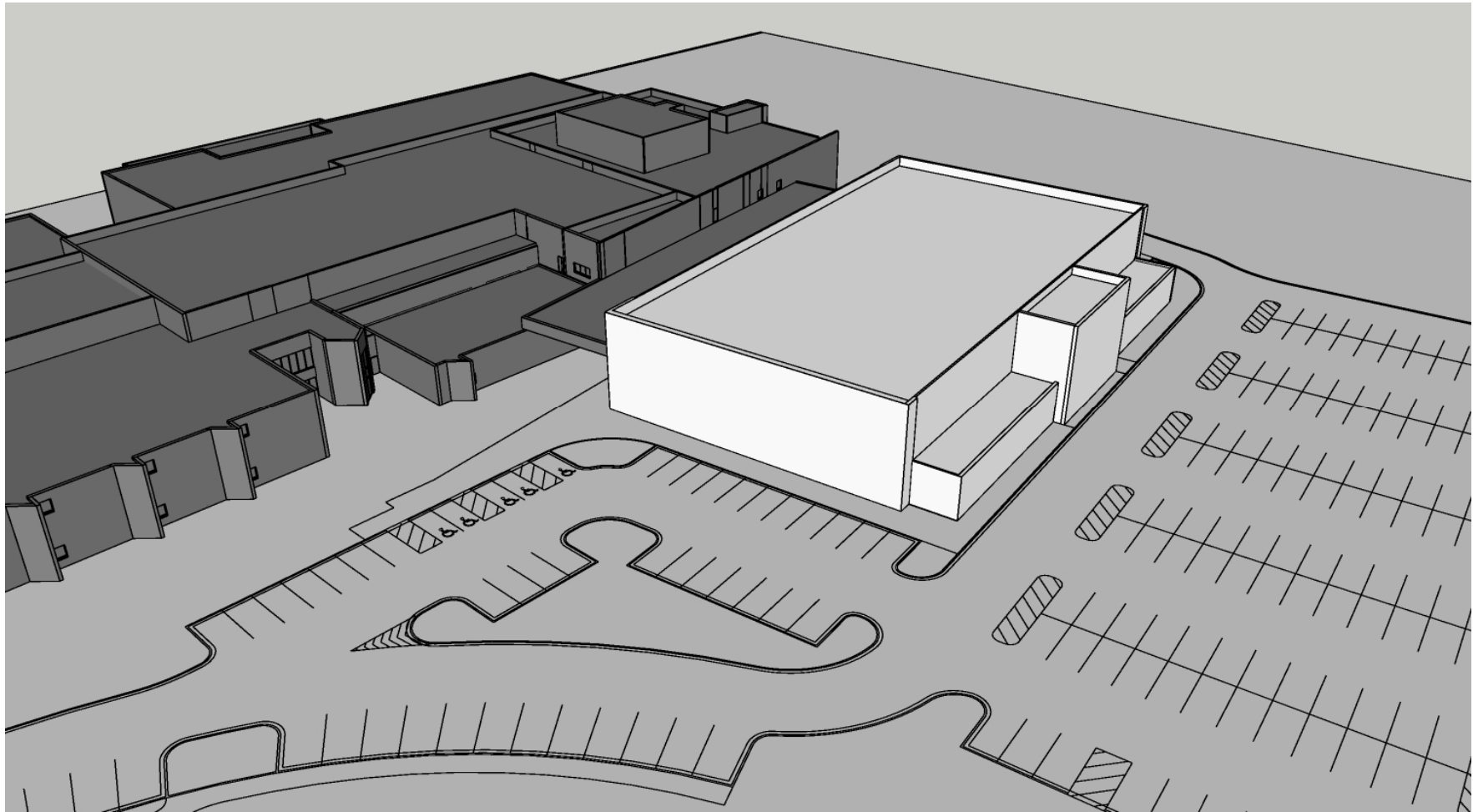


SECTION



# BUILDING FORM

## MASSING



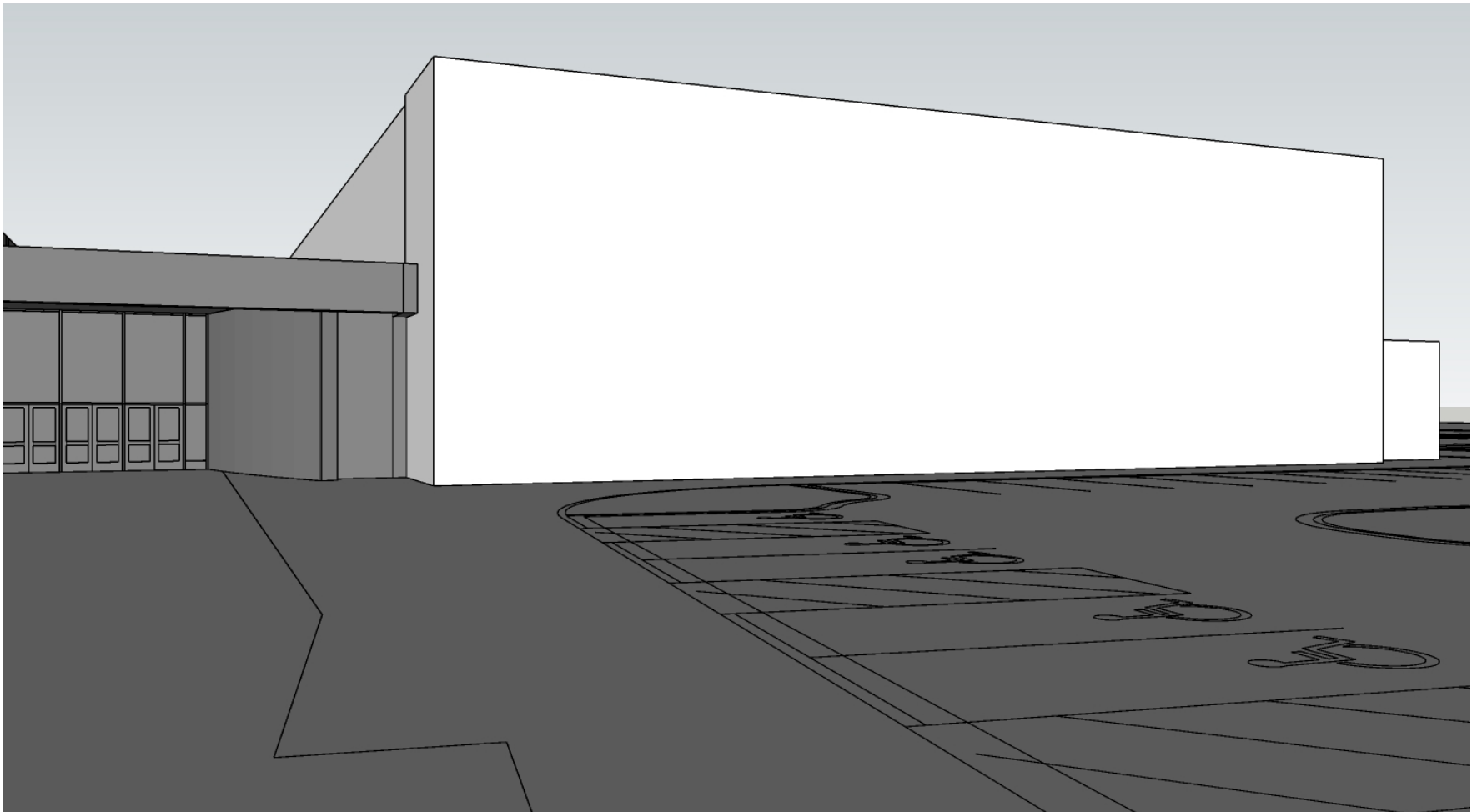
**AERIAL**





# BUILDING FORM

## MASSING

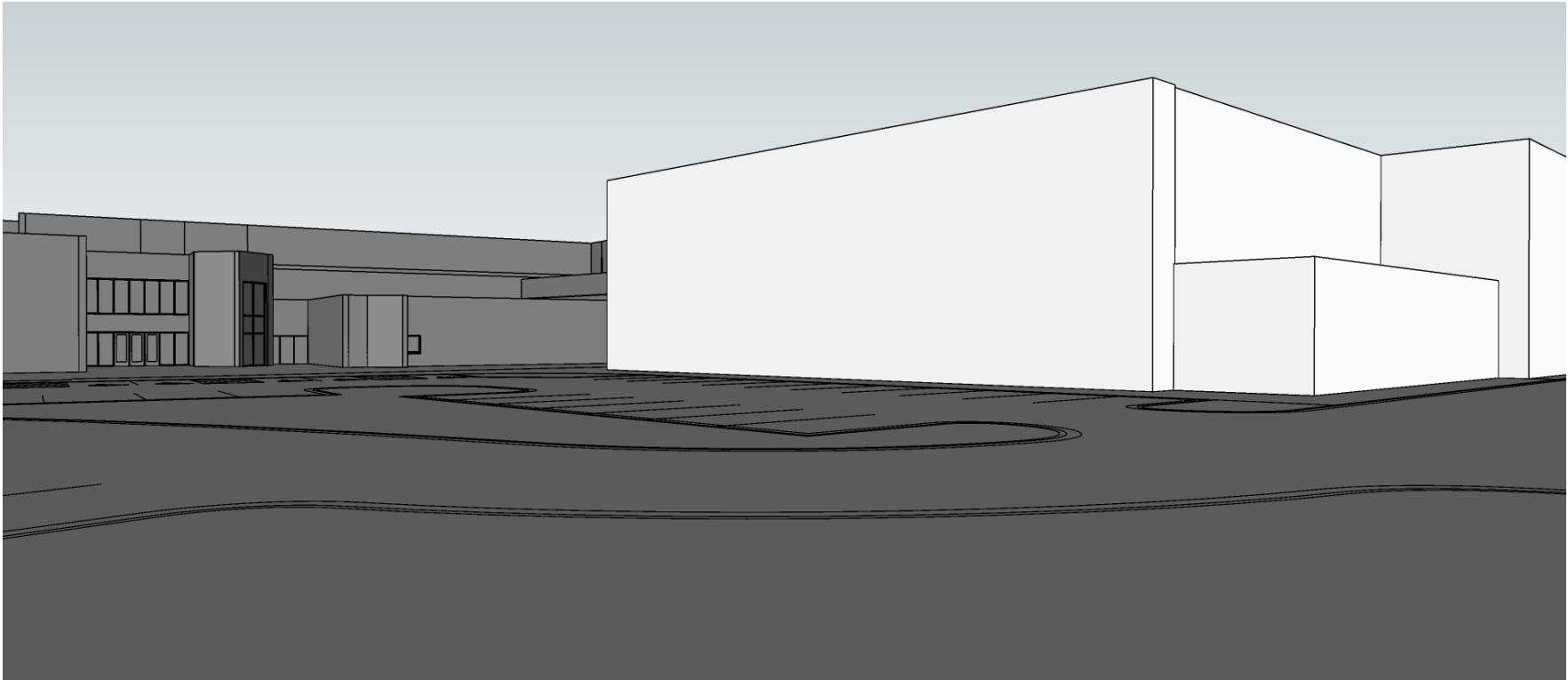


**PERSPECTIVE**



# BUILDING FORM

## MASSING

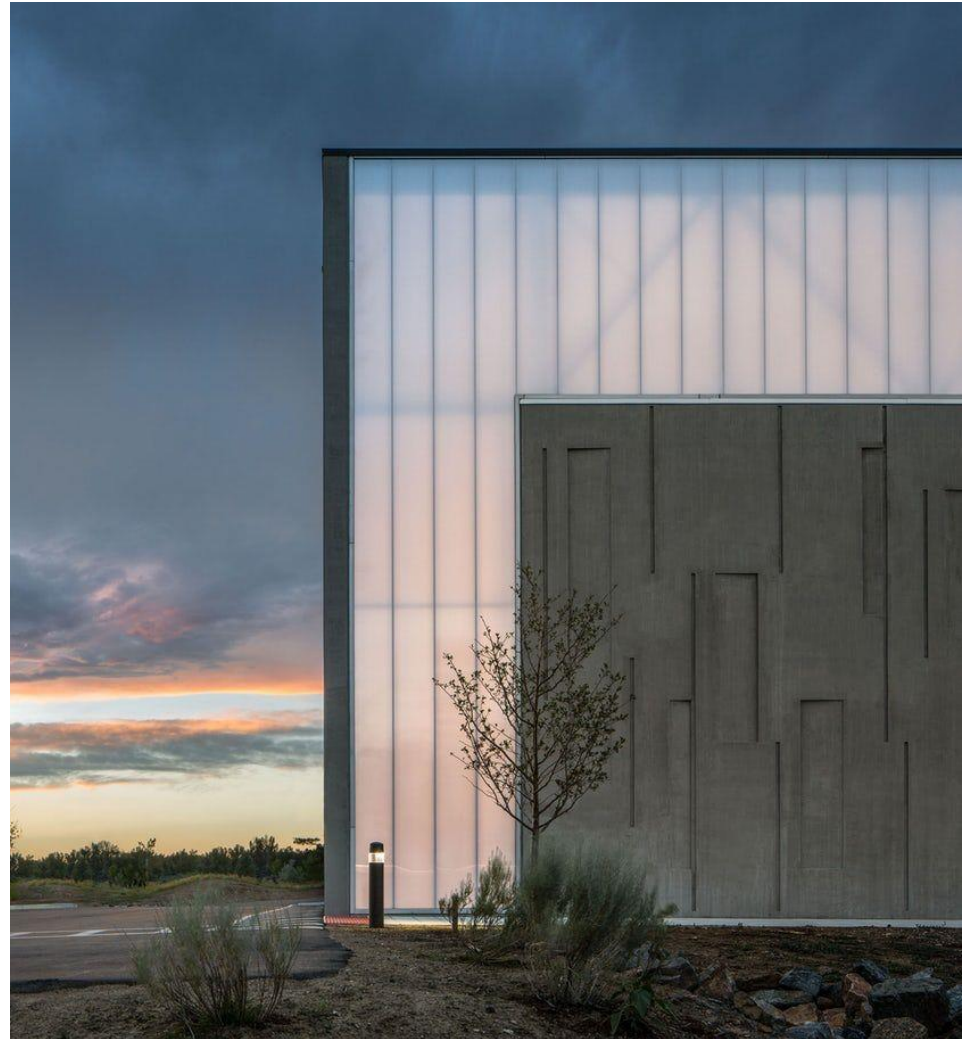


**PERSPECTIVE**



# DESIGN CONSIDERATIONS

## NATURAL LIGHT





# DESIGN CONSIDERATIONS

## NATURAL LIGHT





# DESIGN CONSIDERATIONS

## CONSTRUCTION MATERIALS



**MASONRY**



# DESIGN CONSIDERATIONS

## CONSTRUCTION MATERIALS



**PRE-CAST/MASONRY**



# DESIGN CONSIDERATIONS

## CONSTRUCTION MATERIALS



**PRE-CAST/MASONRY**



# DESIGN CONSIDERATIONS

## CONSTRUCTION MATERIALS



**PRE-CAST PANELS**





# DESIGN CONSIDERATIONS

## CONSTRUCTION MATERIALS



**METAL PANELS**