



User Group Information

Seneca High School

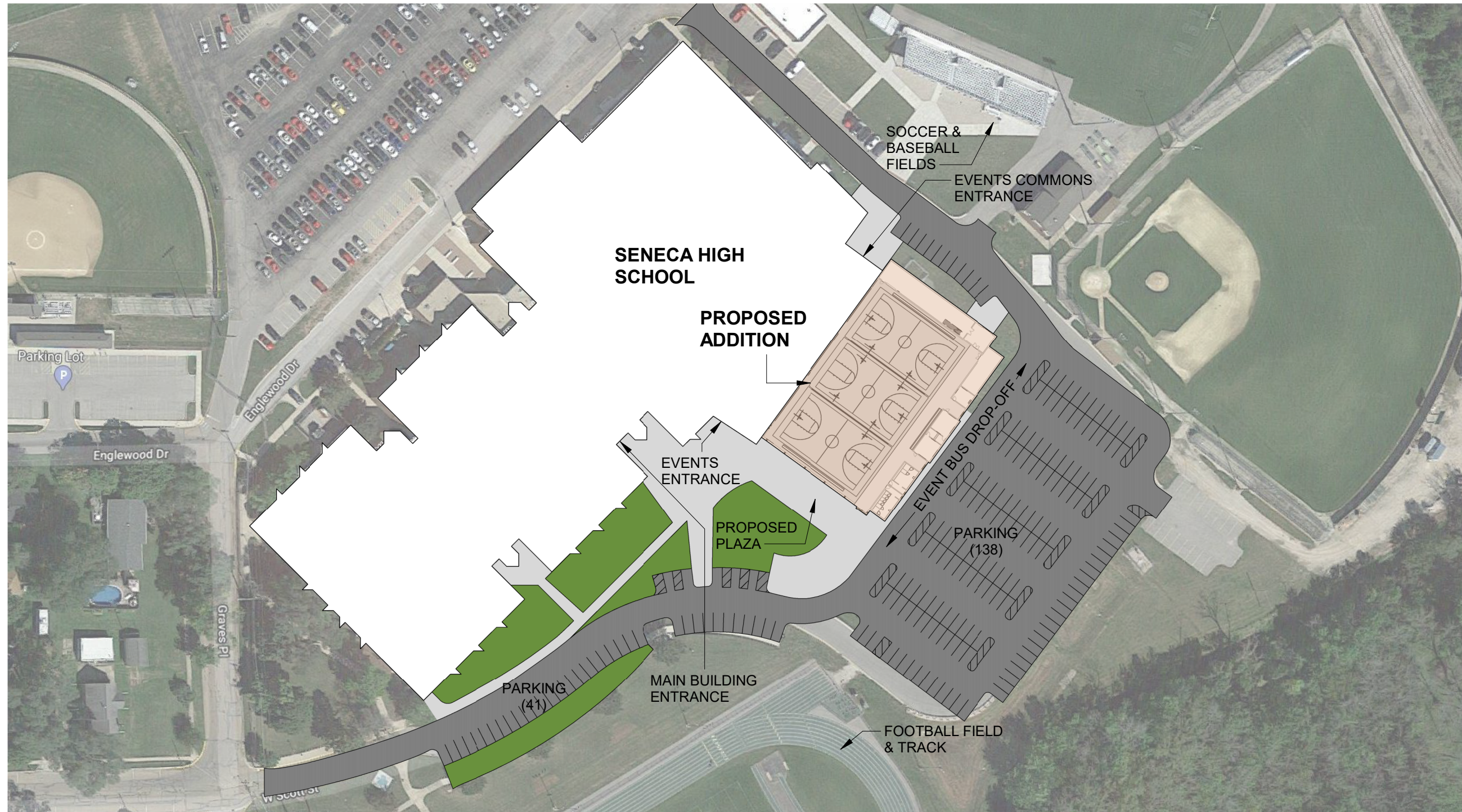
Seneca High School Gymnasium Addition

223002

Seneca, IL

April 06, 2022

UG 02	GYMNASIUM
UG 03	MAT AND LARGE OBJECT STORAGE
UG 04	PE STORAGE
UG 05	TEAMS ROOMS
UG 06	OFFICIALS AND COACHES' ROOM
UG 07	TOILET ROOMS
UG 08	CONCESSIONS
UG 09	MEZZANINE

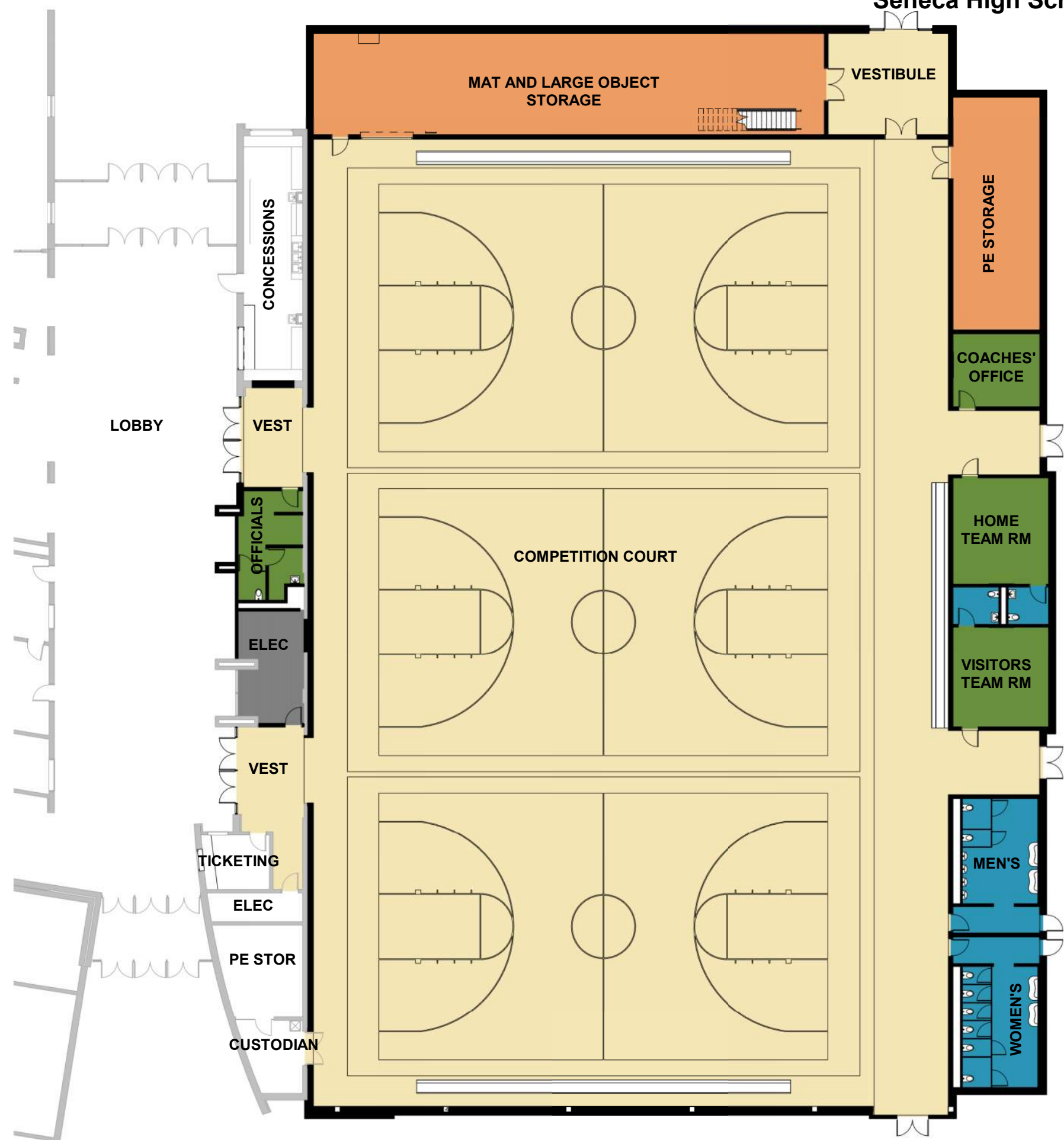


1 SITE PLAN
 1" = 100'-0"
 0 75' 150'



Seneca High School Gymnasium Addition

Seneca High School
April 06, 2022



FUNCTION LEGEND

- ACTIVITY & CIRCULATION
- SUPPORT SPACES
- TOILETS
- MECH/ELEC
- STORAGE

1 GYMNASIUM SCHEMATIC PLAN
 3/64" = 1'-0"
 0 16' 32'



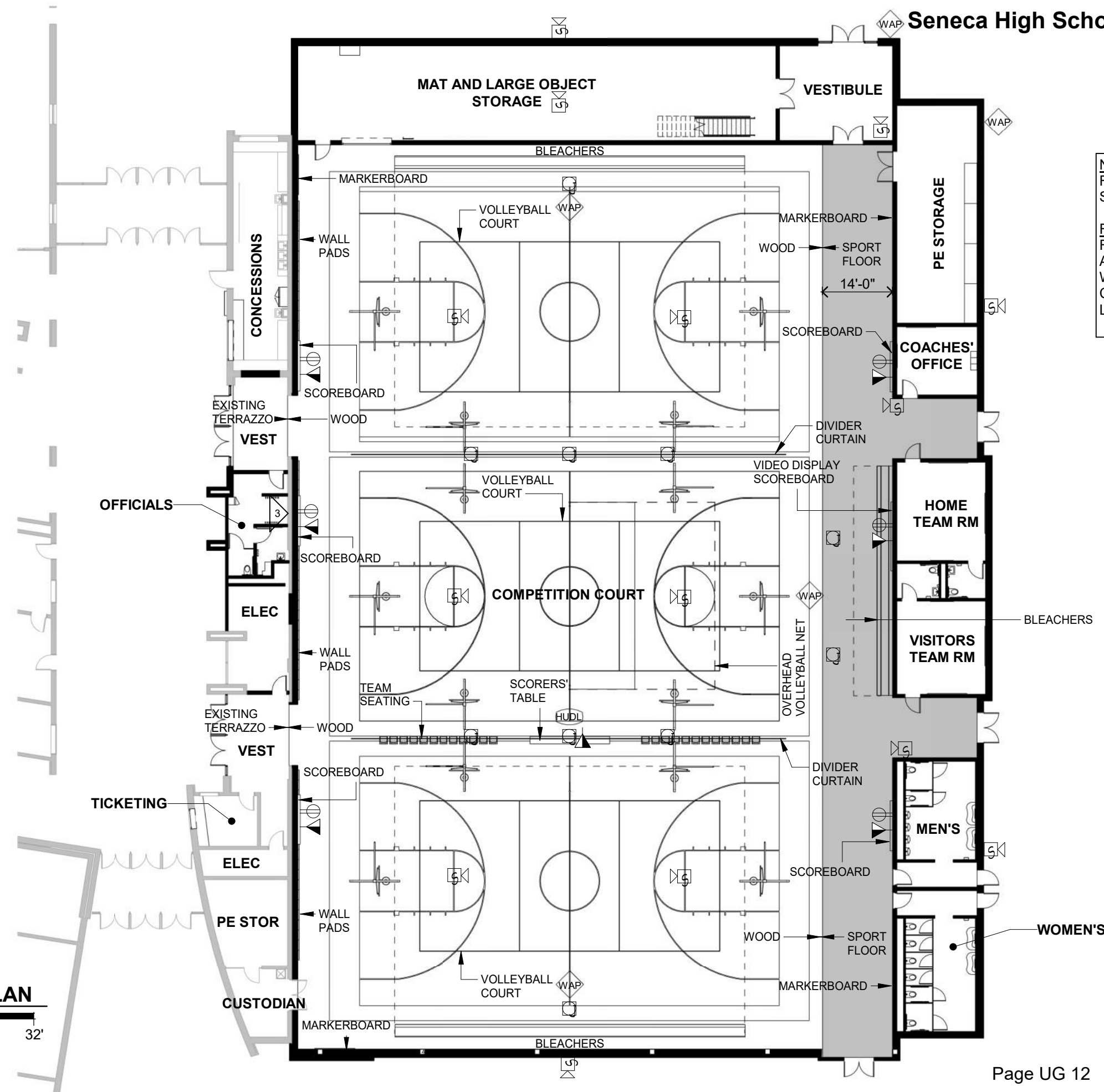
NOTES:
REINSTALL MAT LIFTS IN LARGE STORAGE ROOM

FINISHES:
FLOORING- WOOD AND RUBBER ATHLETIC FLOOR
WALLS- CMU AND PAINT
CEILING- EXPOSED
LIGHTING- LED

ELECTRICAL SYMBOL KEY

- PHONE
- DUPLEX RECEPTACLE
- DOUBLE DUPLEX RECEPTACLE
- SURFACE MOUNT DEVICES
- SINGLE LIGHT SWITCH
- WALL OR CEILING PROJECTOR
- TV OUTLET (HIGH AND/OR LOW)
- DATA OUTLET
- FLOOR BOX (POWER AND DATA)
- CAMERA
- HUDL CAMERA
- WIRELESS ACCESS POINT
- NETWORK BOX
- VAPE SENSOR

1 GYMNASIUM ADDITION PLAN
3/64" = 1'-0"
0 16' 32'



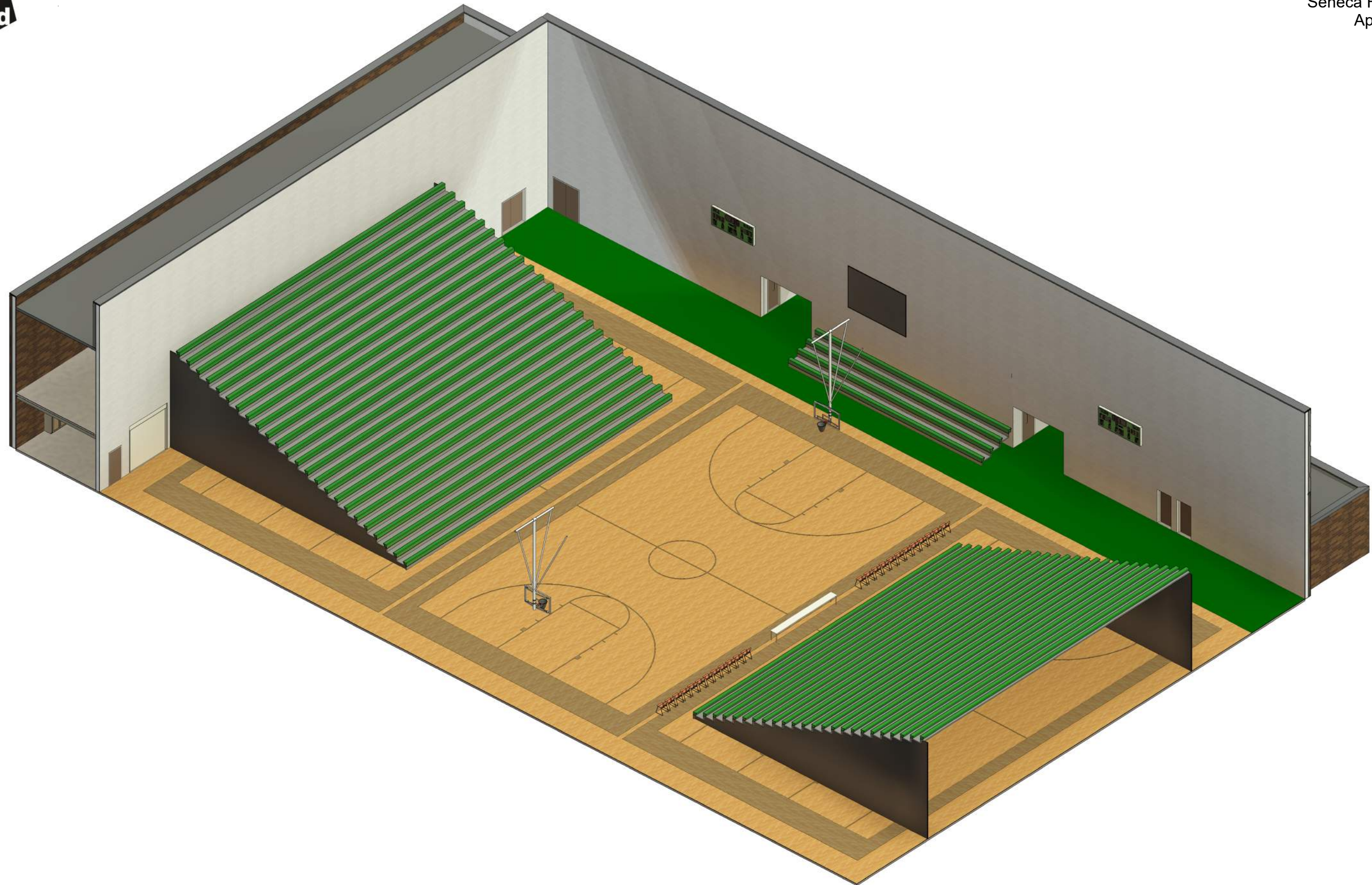
4/5/2022 8:10:18 PM
BIM 360://223002- Seneca HS Gymnasium Addition/Seneca HS Central (2021)_Arch.rvt
BIM 360://223002- Seneca HS Gymnasium Addition/Seneca HS Central (2021)_Arch.rvt



Seneca High School Gymnasium Addition

Seneca High School

April 06, 2022

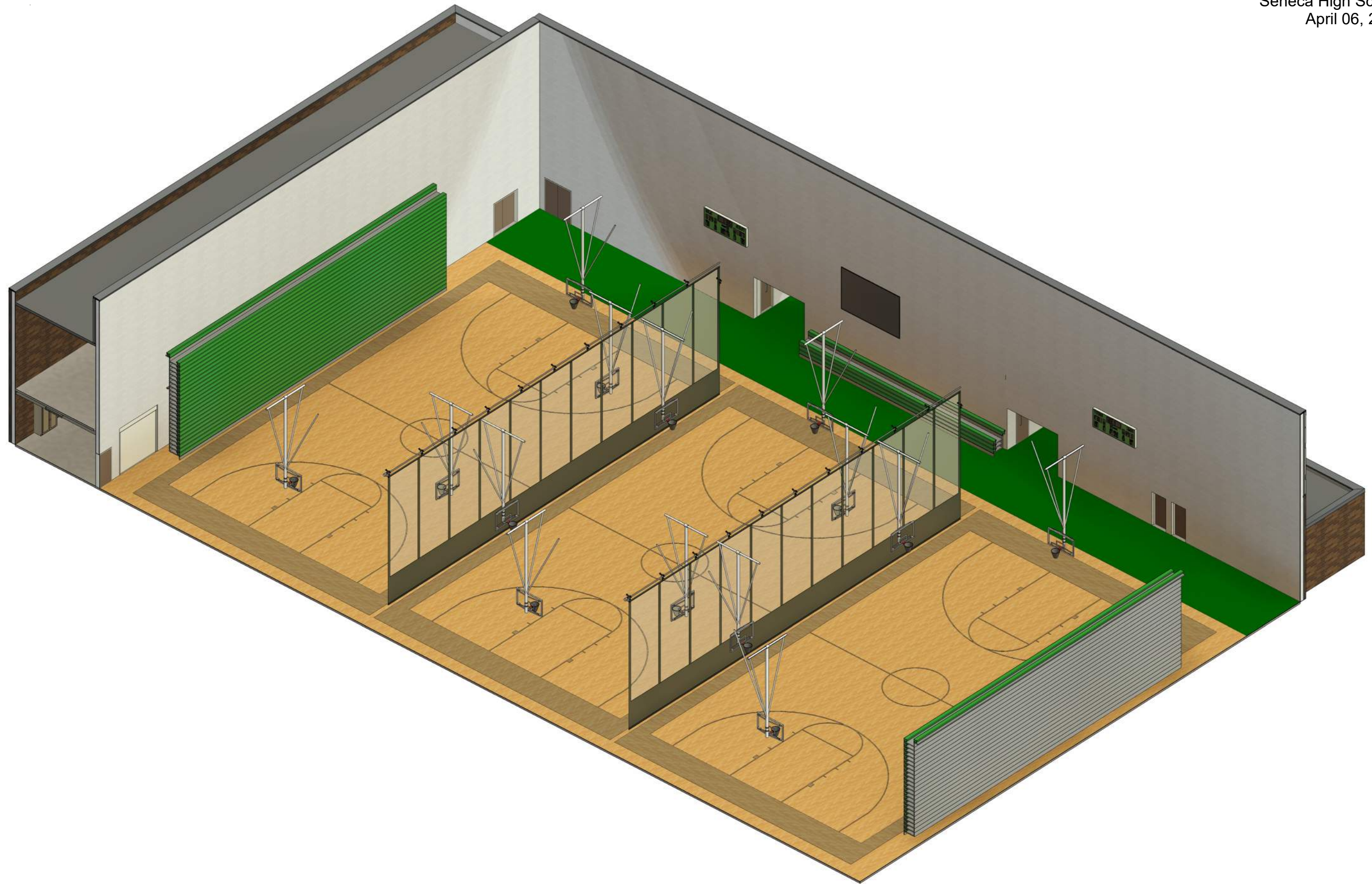




Seneca High School Gymnasium Addition

Seneca High School

April 06, 2022

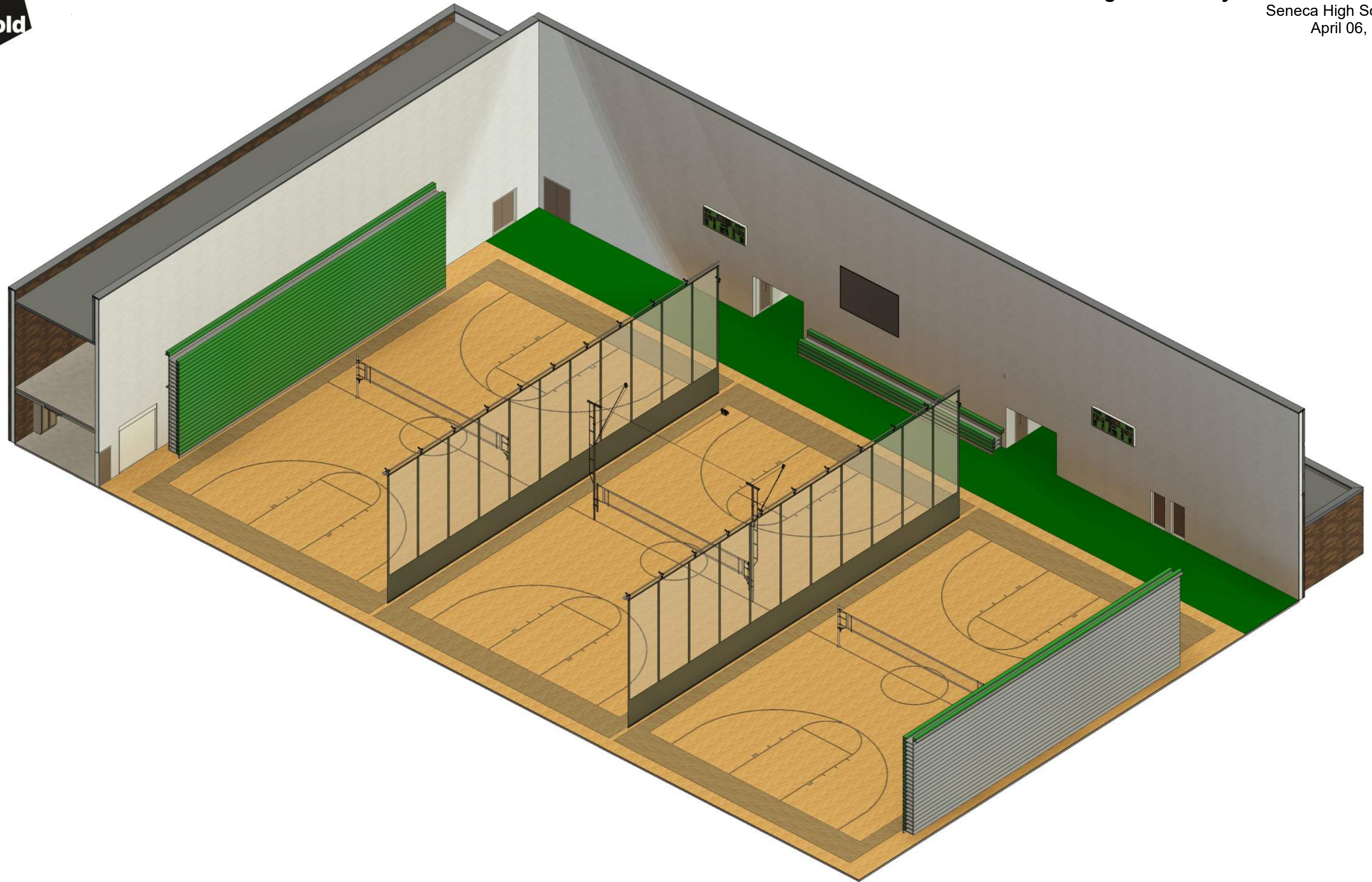




Seneca High School Gymnasium Addition

Seneca High School

April 06, 2022





ELECTRICAL SYMBOL KEY

- PHONE
- DUPLEX RECEPTACLE
- DOUBLE DUPLEX RECEPTACLE
- SURFACE MOUNT DEVICES
- SINGLE LIGHT SWITCH
- WALL OR CEILING PROJECTOR
- TV OUTLET (HIGH AND/OR LOW)
- DATA OUTLET
- FLOOR BOX (POWER AND DATA)
- CAMERA
- HUDL CAMERA
- WIRELESS ACCESS POINT
- NETWORK BOX
- VAPE SENSOR

Seneca High School Gymnasium Addition

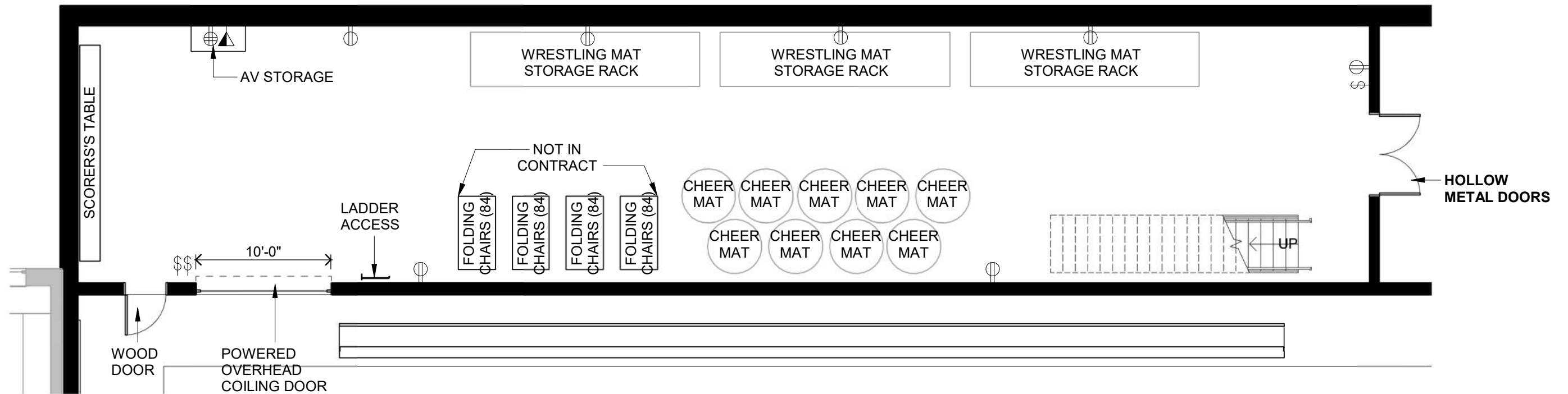
Seneca High School

April 06, 2022

NOTES:

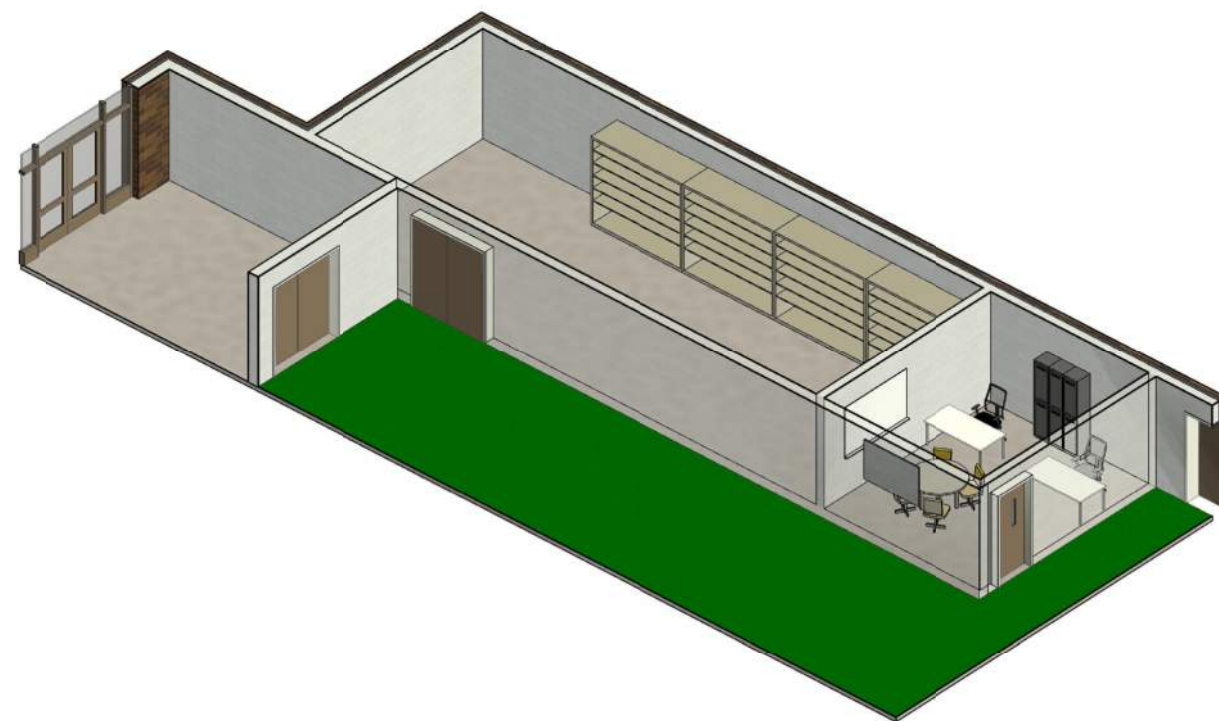
FINISHES:

- FLOORING- POLISHED CONCRETE
- WALLS- CMU BLOCK AND PAINT
- CEILING- PAINTED STEEL DECK
- DECK LIGHTING- SURFACE MOUNTED

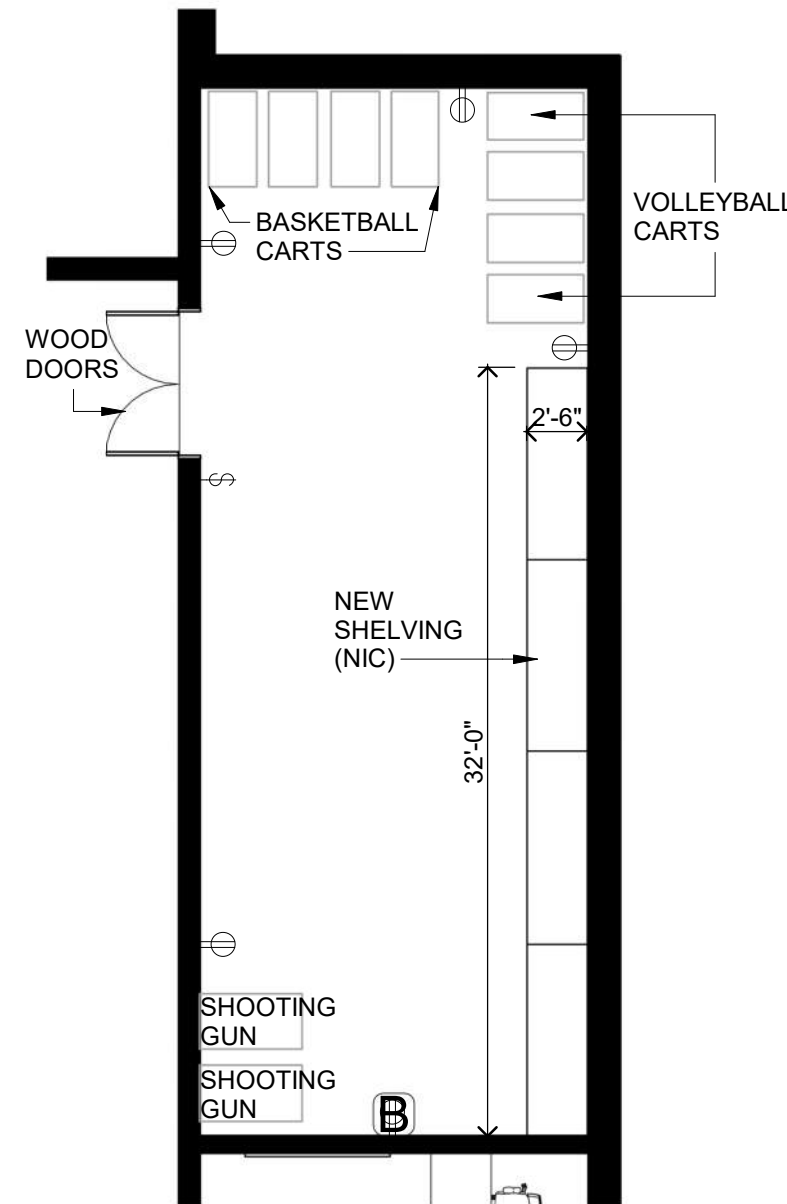


MAT AND LARGE EQUIPMENT STORAGE



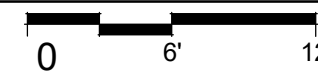


2 STORAGE AXON



1 PE STORAGE

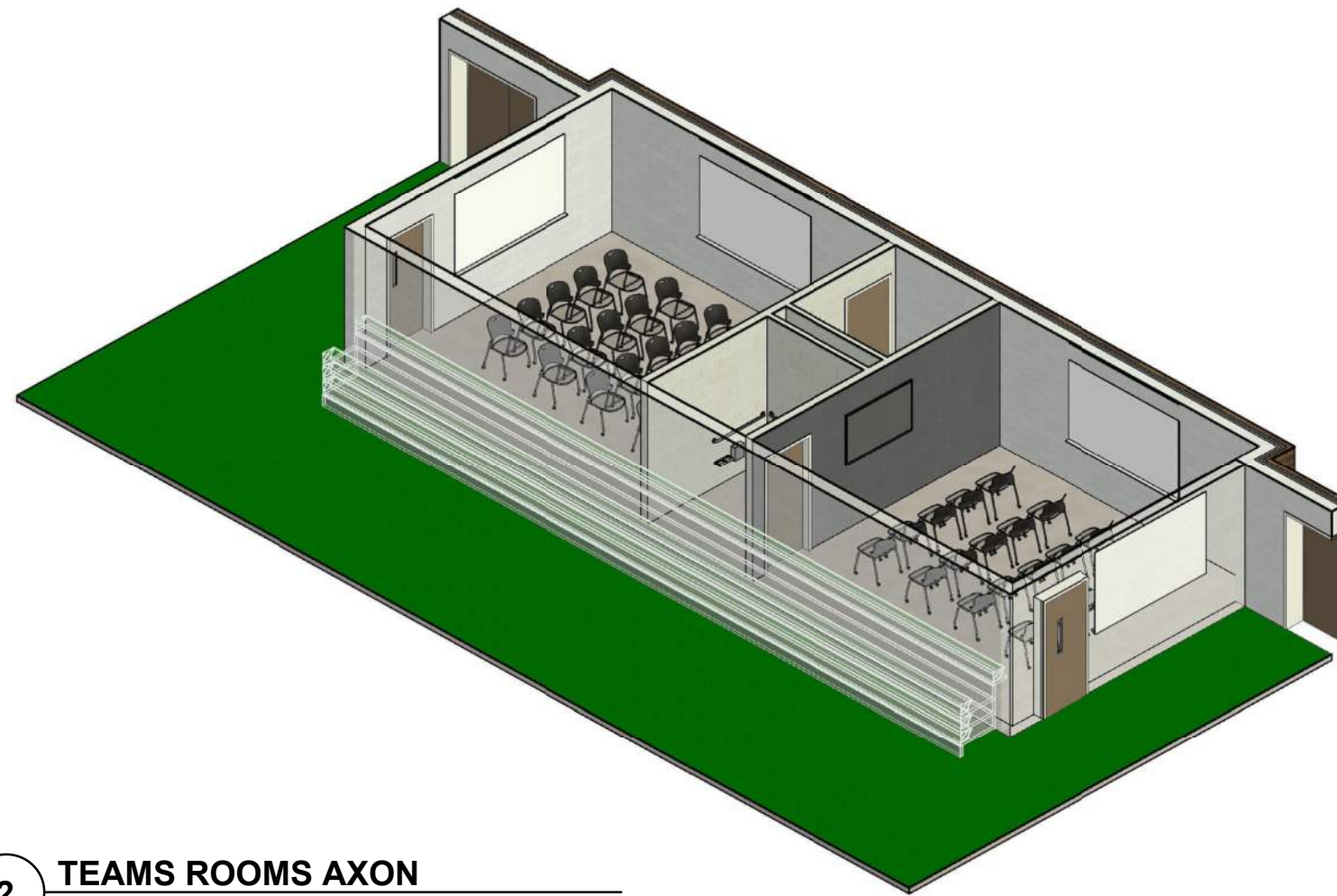
1/8" = 1'-0"



NOTES:
FINISHES:
FLOORING- POLISHED CONCRETE
WALLS- CMU AND PAINT
CEILING- PAINTED STEEL DECK
LIGHTING- SURFACE MOUNTED

ELECTRICAL SYMBOL KEY

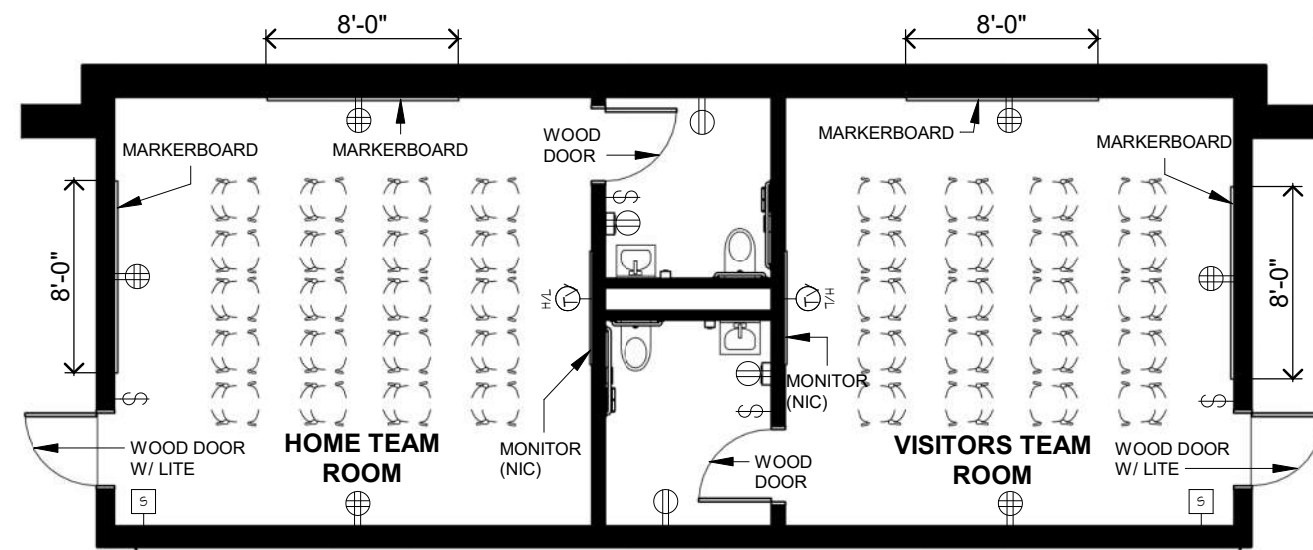
- ☎ PHONE
- ⊕ DUPLEX RECEPTACLE
- ⊕⊕ DOUBLE DUPLEX RECEPTACLE
- ☎ ▽ SURFACE MOUNT DEVICES
- ⚡ SINGLE LIGHT SWITCH
- ☎ ☎ WALL OR CEILING PROJECTOR
- ☎ TV OUTLET (HIGH AND/OR LOW)
- ⚡ DATA OUTLET
- ☎ FLOOR BOX (POWER AND DATA)
- ☎ CAMERA
- ☎ HUDL HUDL CAMERA
- ☎ WAP WIRELESS ACCESS POINT
- ☎ B NETWORK BOX
- ☎ V VAPE SENSOR



2 TEAMS ROOMS AXON

NOTES:

FINISHES:
 FLOORING- LVT
 TOILET FLOORING- TILE
 WALLS- PAINT
 CEILING- ACT
 LIGHTING- LED



1 TEAMS ROOMS
 1/8" = 1'-0"
 0 6' 12'

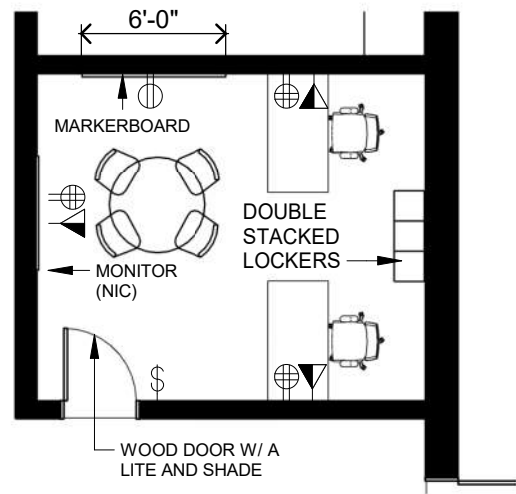
ELECTRICAL SYMBOL KEY

- ☎ PHONE
- ⊕ DUPLEX RECEPTACLE
- ⊕⊕ DOUBLE DUPLEX RECEPTACLE
- ☐ ▽ SURFACE MOUNT DEVICES
- ⚡ SINGLE LIGHT SWITCH
- ☐ ☐ WALL OR CEILING PROJECTOR
- ☐ TV OUTLET (HIGH AND/OR LOW)
- ☐ DATA OUTLET
- ☐ FLOOR BOX (POWER AND DATA)
- ☐ CAMERA
- ☐ HUDL CAMERA
- ☐ WAP WIRELESS ACCESS POINT
- ☐ NETWORK BOX
- ☐ VAPE SENSOR

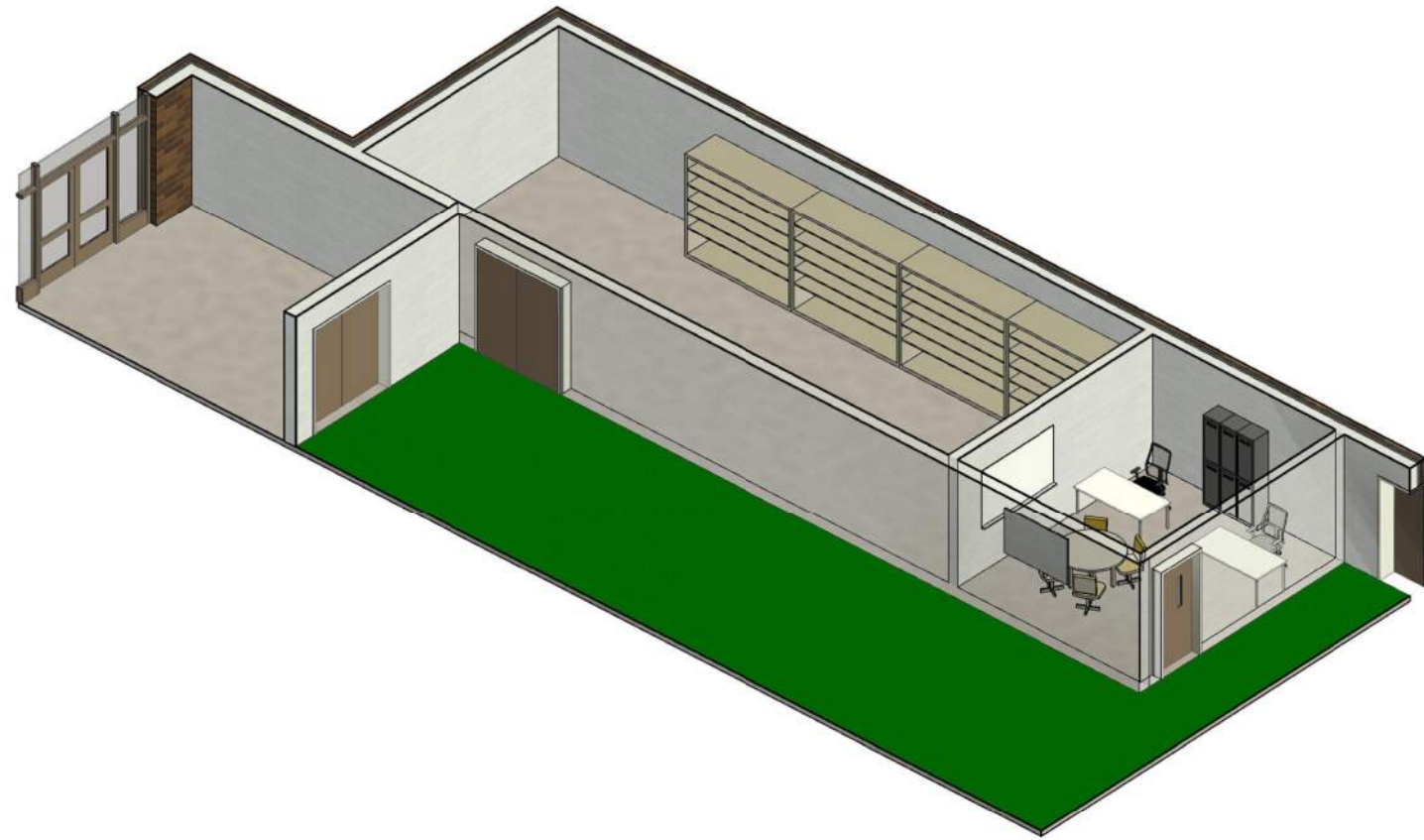


NOTES:

FINISHES:
 OFFICIALS FLOORING- LVT/TILE
 COACHES' FLOORING- LVT
 WALLS- CMU PAINT
 CEILING- ACT
 LIGHTING- LED

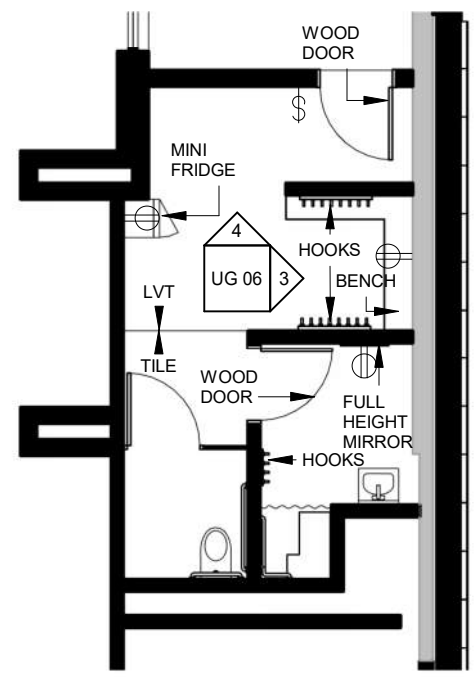


2 COACHES' ROOM
 1/8" = 1'-0"
 0 6' 12'

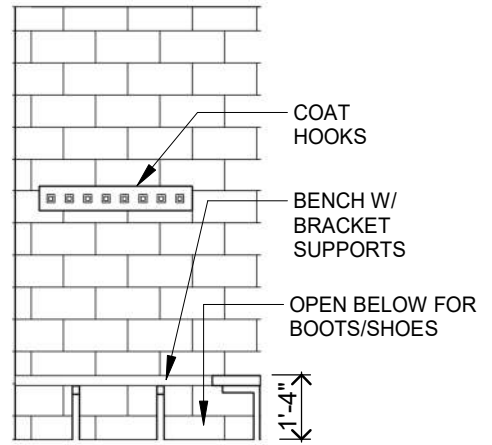


ELECTRICAL SYMBOL KEY

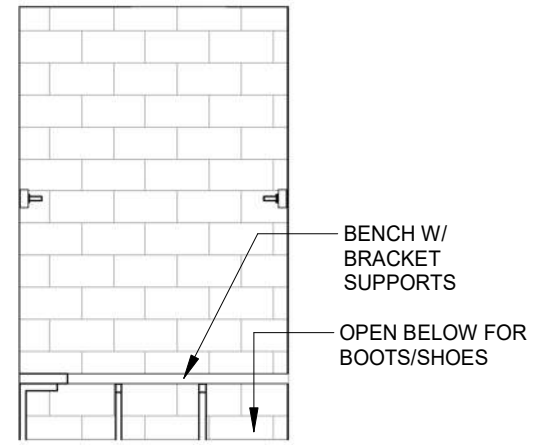
- ☎ PHONE
- ⊕ DUPLEX RECEPTACLE
- ⊕⊕ DOUBLE DUPLEX RECEPTACLE
- ⊕▽ SURFACE MOUNT DEVICES
- ⚡ SINGLE LIGHT SWITCH
- ⊕⊕ WALL OR CEILING PROJECTOR
- ⊕⊕ TV OUTLET (HIGH AND/OR LOW)
- ◀ DATA OUTLET
- ☑ FLOOR BOX (POWER AND DATA)
- 📷 CAMERA
- 📹 HUDL CAMERA
- 📶 WAP WIRELESS ACCESS POINT
- 📦 NETWORK BOX
- 📡 VAPE SENSOR



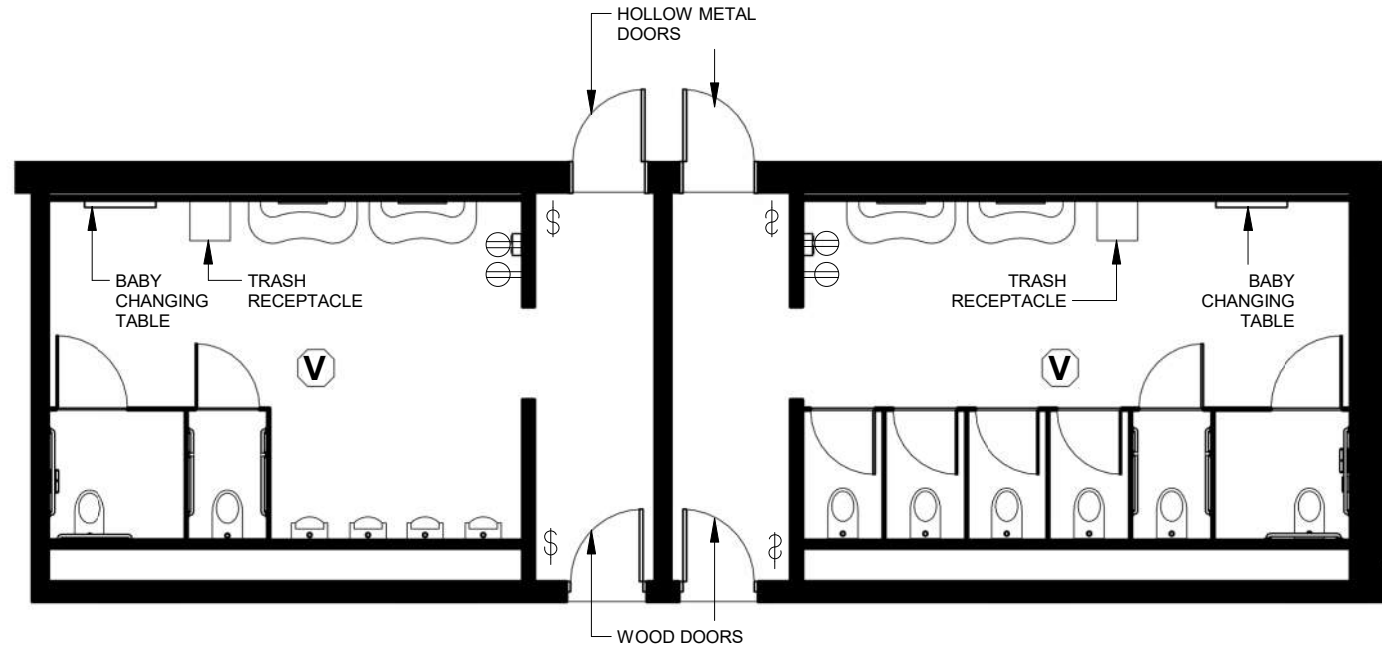
1 OFFICIALS ROOM
 1/8" = 1'-0"
 0 6' 12'



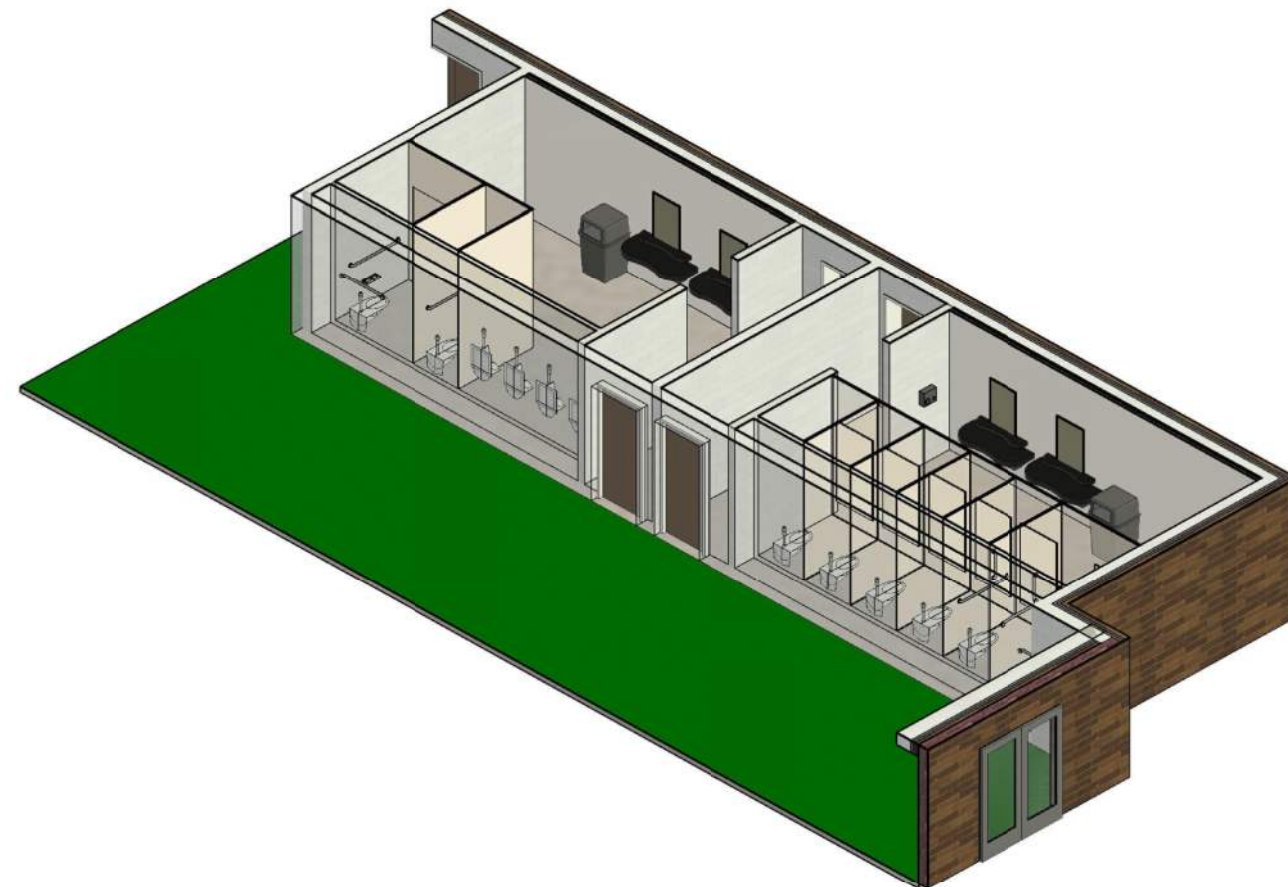
4 OFFICIALS ROOM ELEVATION 1
 1/4" = 1'-0"
 0 3' 6'



3 OFFICIALS ROOM ELEVATION 2
 1/4" = 1'-0"
 0 3' 6'



1 TOILET ROOMS
 1/8" = 1'-0"
 0 6' 12'



2 TOILET ROOM AXON

NOTES:
 PORCELAIN FIXTURES
 HARDWIRED FIXTURES

FINISHES:
 FLOORING- TILE
 WALLS- PAINT/TILE
 CEILING- VINYL ACT
 LIGHTING- RECESSED

ELECTRICAL SYMBOL KEY

- ☎ PHONE
- ⊕ DUPLEX RECEPTACLE
- ⊕⊕ DOUBLE DUPLEX RECEPTACLE
- ⊕▽ SURFACE MOUNT DEVICES
- ⚡ SINGLE LIGHT SWITCH
- ⊕⊕ WALL OR CEILING PROJECTOR
- ⊕⊕ TV OUTLET (HIGH AND/OR LOW)
- ◀ DATA OUTLET
- ☐ FLOOR BOX (POWER AND DATA)
- 📷 CAMERA
- HUDL HUDL CAMERA
- WAP WIRELESS ACCESS POINT
- ⓑ NETWORK BOX
- Ⓥ VAPE SENSOR

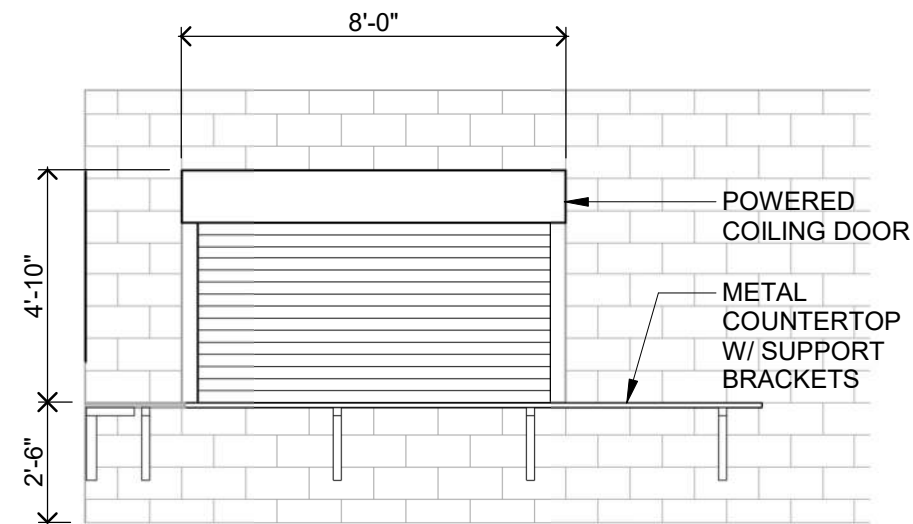


ELECTRICAL SYMBOL KEY

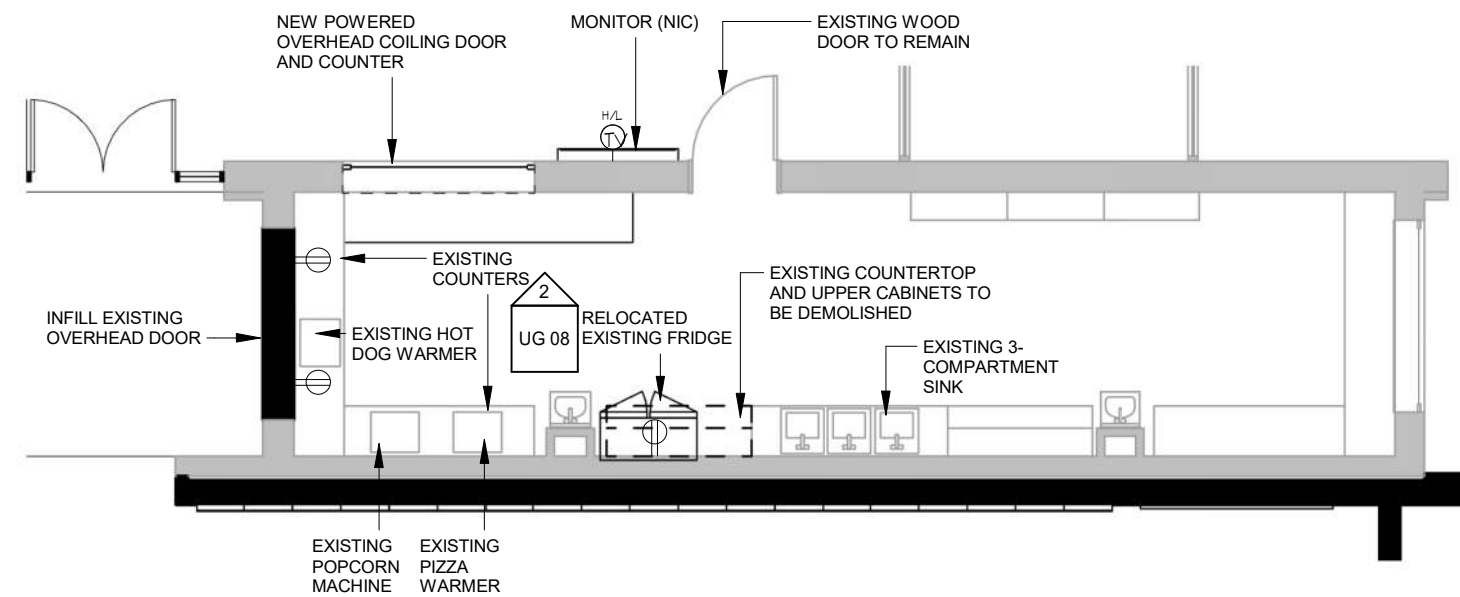
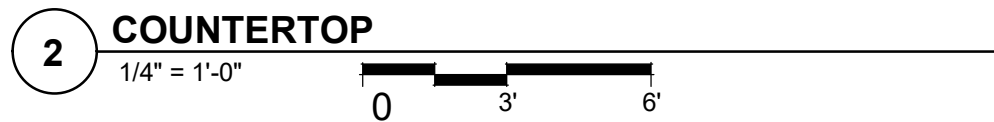
- PHONE
- DUPLEX RECEPTACLE
- DOUBLE DUPLEX RECEPTACLE
- SURFACE MOUNT DEVICES
- SINGLE LIGHT SWITCH
- WALL OR CEILING PROJECTOR
- TV OUTLET (HIGH AND/OR LOW)
- DATA OUTLET
- FLOOR BOX (POWER AND DATA)
- CAMERA
- HUDL CAMERA
- WIRELESS ACCESS POINT
- NETWORK BOX
- VAPE SENSOR

NOTES:

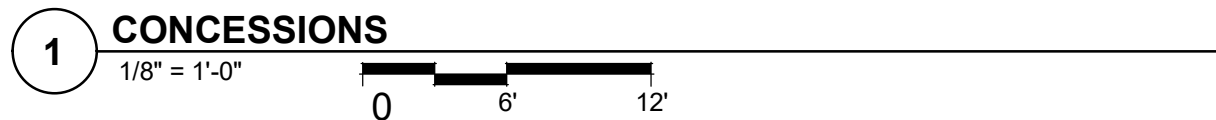
- FINISHES:**
 FLOORING- EXISTING EPOXY
 WALLS- PAINT
 CEILING- ACT
 LIGHTING- EXISTING RECESSED



OVERHEAD DOOR AT COUNTERTOP



CONCESSIONS

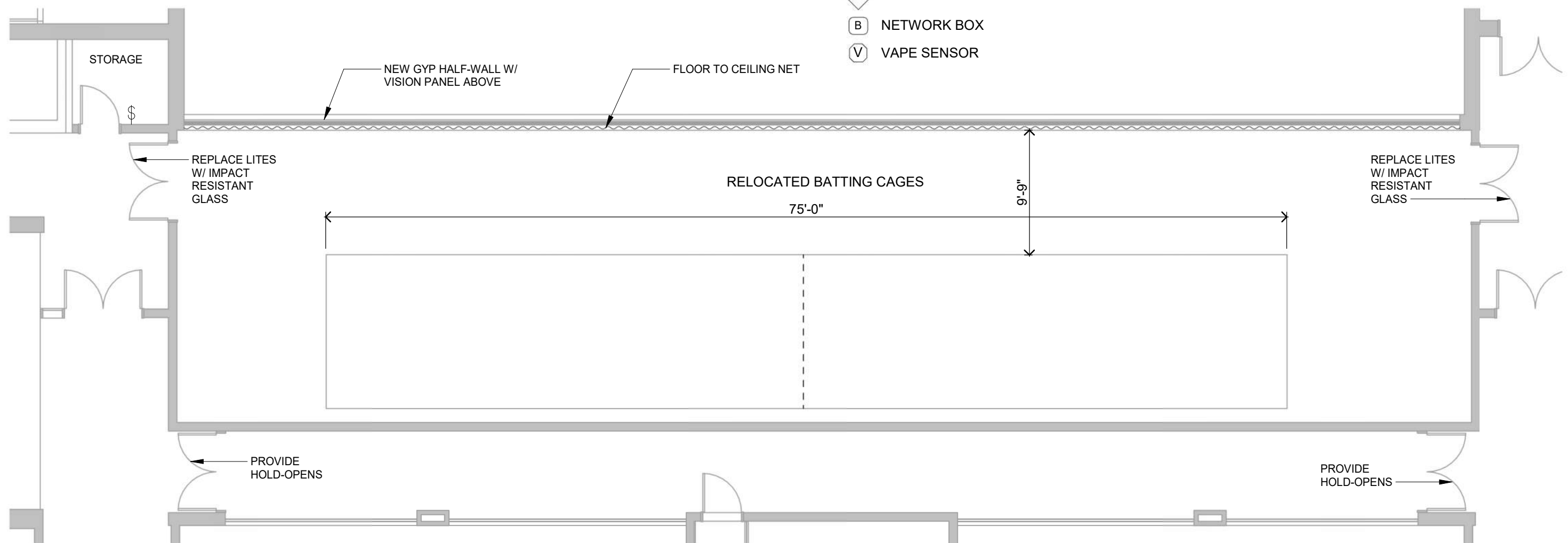




ELECTRICAL SYMBOL KEY

- PHONE
- DUPLEX RECEPTACLE
- DOUBLE DUPLEX RECEPTACLE
- SURFACE MOUNT DEVICES
- SINGLE LIGHT SWITCH
- WALL OR CEILING PROJECTOR
- TV OUTLET (HIGH AND/OR LOW)
- DATA OUTLET
- FLOOR BOX (POWER AND DATA)
- CAMERA
- HUDL CAMERA
- WIRELESS ACCESS POINT
- NETWORK BOX
- VAPE SENSOR

NOTES:
FINISHES:
 FLOORING- TURF
 WALLS- EXISTING AND GYP BD HALF WALL
 CEILING- EXISTING
 LIGHTING- EXISTING



1 GYM MEZZANINE
 1/8" = 1'-0"
 0 6' 12'



Seneca High School Gymnasium Addition

Seneca High School

April 06, 2022

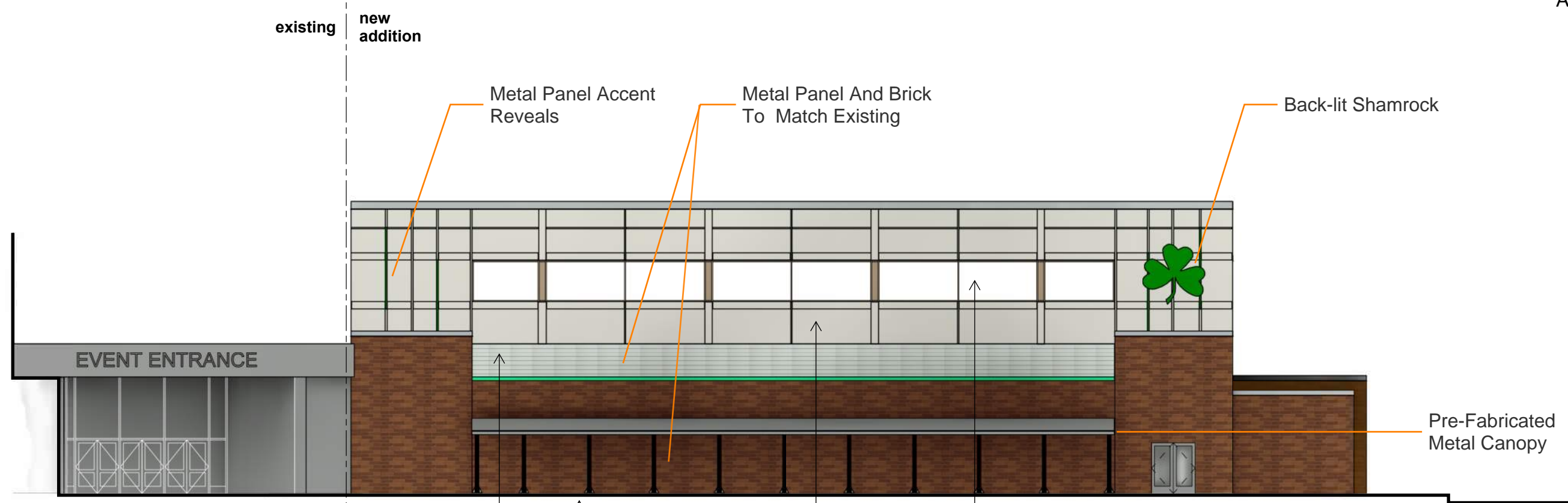




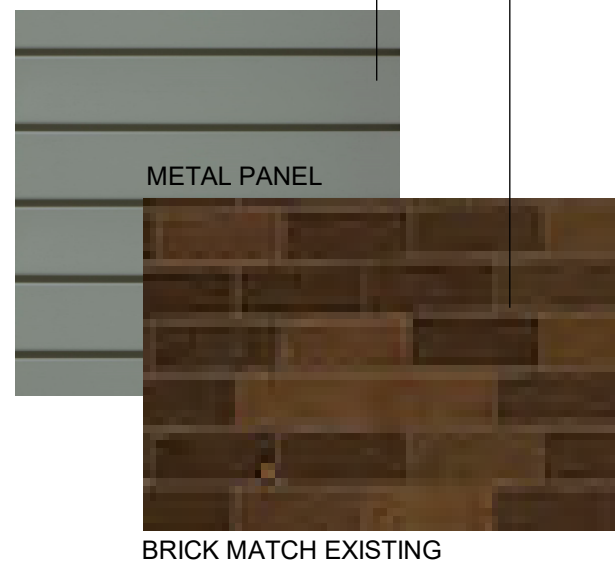
Seneca High School Gymnasium Addition

Seneca High School

April 06, 2022



EXISTING



NEW



Seneca High School Gymnasium Addition

Seneca High School

April 06, 2022





Seneca High School Gymnasium Addition

Seneca High School

April 06, 2022

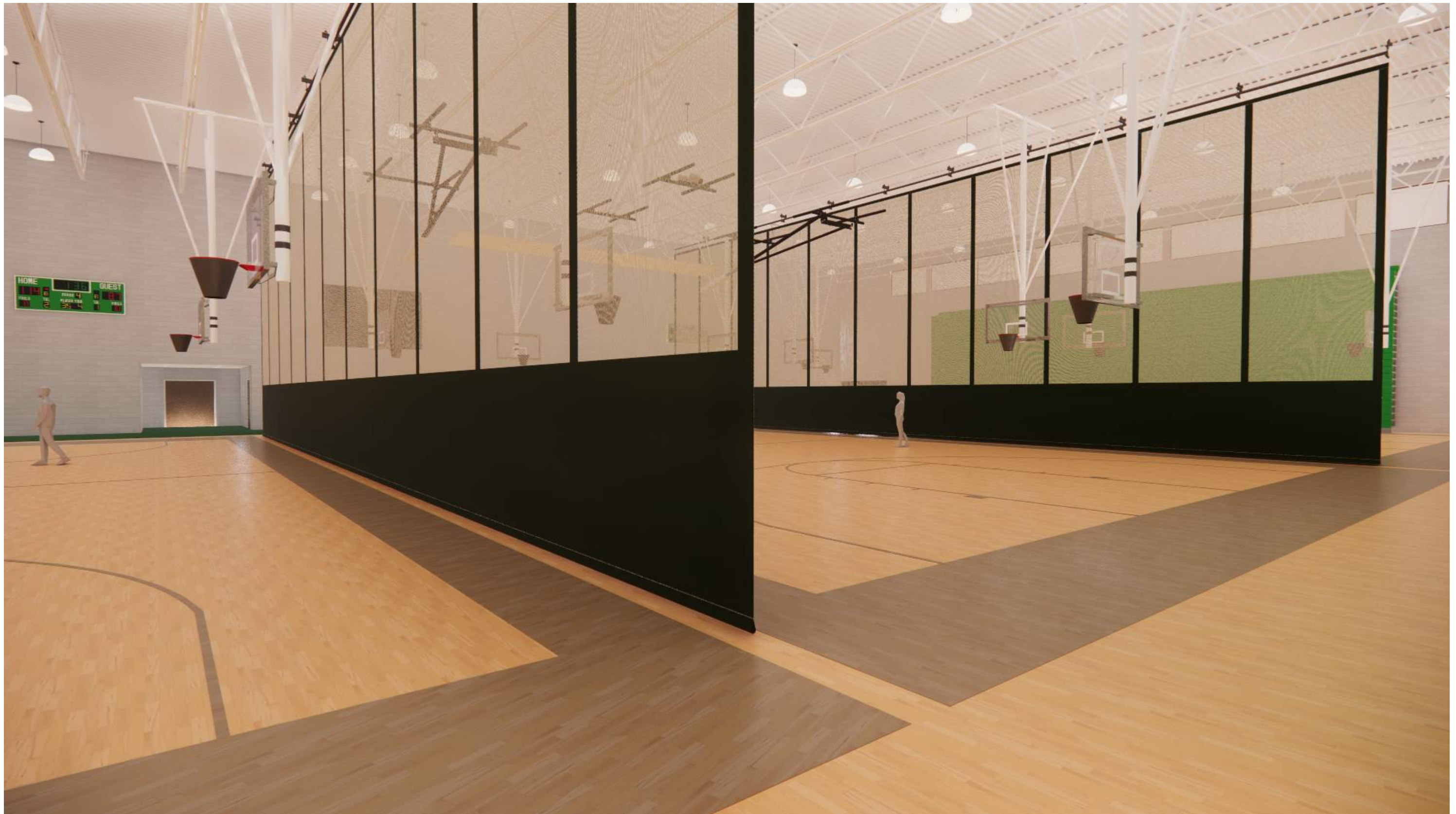




Seneca High School Gymnasium Addition

Seneca High School

April 06, 2022





Seneca High School Gymnasium Addition

Seneca High School

April 06, 2022

